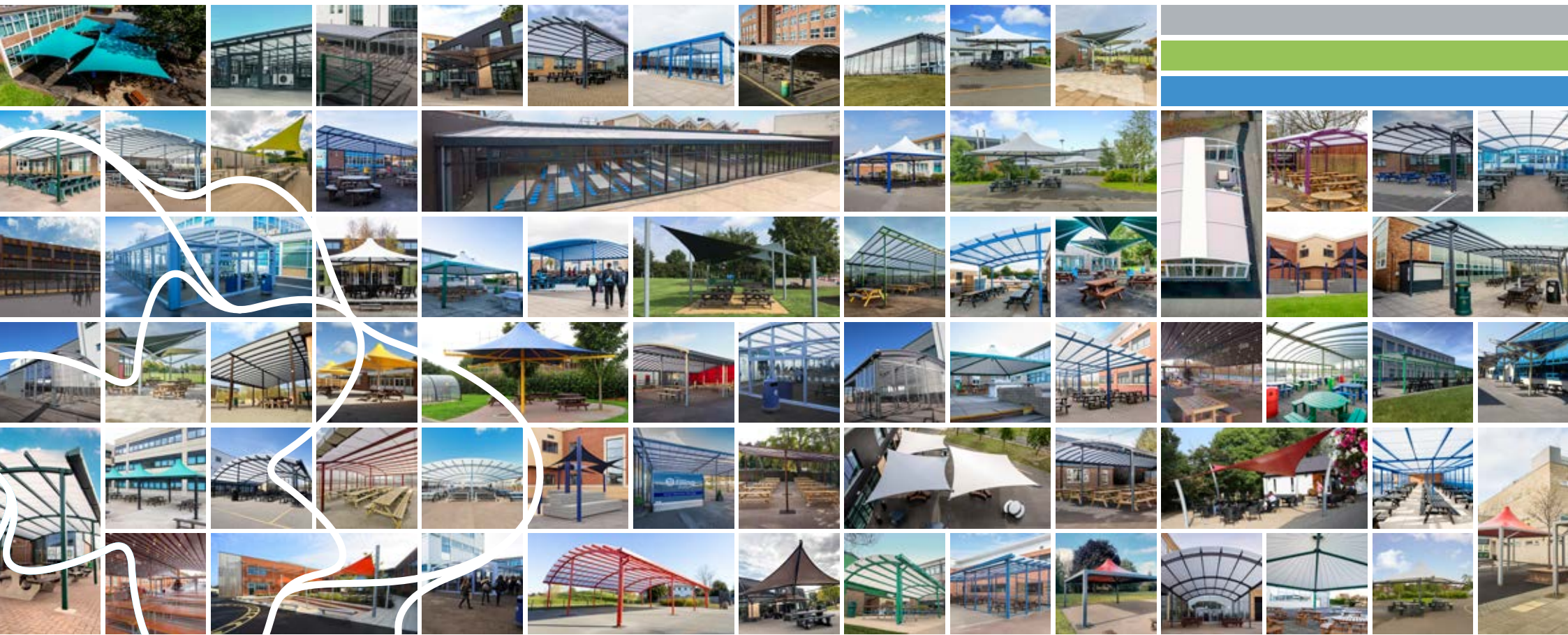


OUTDOOR DINING AREA INSPIRATION



SHADE & SHELTER SOLUTIONS FOR SCHOOLS ACROSS THE UK

OUTDOOR DINING INSPIRATION QUICK LINKS



Duo **01**



Linear **09**



Mono **13**



Click images to go directly
to the corresponding page



Sail **16**



StarSail **18**



Tepee **20**



Umbrella **24**



Retractable **27**



Plaza **31**



Concepts **32**





 Watch the video





Co-op Academy Failsworth



Welcome to **Co-op Academy Failsworth**, we're part of the Co-op Academies Trust Multi Academy. We're an 11-16, 1,500 student establishment in Manchester. My role here is the Senior Director of Business and HR.

We've been talking for quite some time about providing the students with a **bespoke covered area in the external courtyards** and we've managed to bring that project through to fruition this year by deploying these two external canopies.

We actually found our communication with A&S Landscape to be exemplary to be honest, very professional right from the very initial stages of discussion through to post tender and procurement.

The prices compared with a number of other companies that bid through the tender framework, although I have to say we actually took on board price but also references and previous local projects which A&S have undertaken in the area.

In terms of the design stage, A&S helped me as project manager specifically a great deal.

In terms of the size, the design, the colours, the branding. Quite a lot of information contained in that particular part of the project so we found communication throughout the whole project to be absolutely superb.

The conduct of the staff on site was great.

So we've been delighted with the project and we think the proof is in the pudding, the students have absolutely embraced what we've done here. **We would certainly recommend or use A&S Landscape again for any external projects.**

 [Click here to watch the video testimonial](#)



 Watch the video









My name is **Ian Gosling** and I am at **Our Lady's Roman Catholic High School** in Blakely, North Manchester. Here at Our Lady's we are a growing school and one of the challenges that we had was to look for extra dining room space for our students. One opportunity for us was to explore the outdoor space.

Communication with A&S was brilliant from day one. Having dealt with them years ago I had no hesitation in picking up the phone to their offices and within half an hour they were back to us and the project was pencilled in the diary. **Everything was delivered on time, they did what they said on the tin, as the saying goes.** From start to finish the project just worked a dream and they fitted around the school's requirements.

I had no hesitation going back to A&S because I knew I was going to get value for money, which has proven to be the case.

We were offered different types of roofing, different stanchions, different colours, and what was important was the actual location to make sure that it matched the needs of the children. **The whole project from start to finish, from the moment I got the authorisation from the school governors through to completion, was seamless.**

They took into consideration things like the location of the drains, the sunlight, the drainage, all practical things that made the end product just what we wanted it to be. In the course of the actual construction, this was done out of school hours but within a very tight summer holiday period. The timeline that they set they kept to.

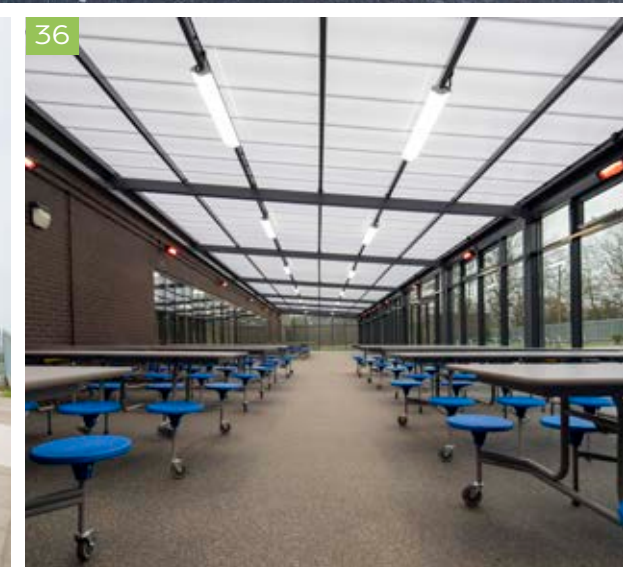
We found the materials to be very reliable and durable. One of the reasons we went back to A&S Landscape was because the canopy that they built seven or eight years ago has stood the test of time. We have no hesitation in thinking that the new construction will do exactly the same.

I heartily recommend A&S Landscape to any other school or any other potential customer and we have done so. We recommend them to all the schools and I'd very gladly work with them again.

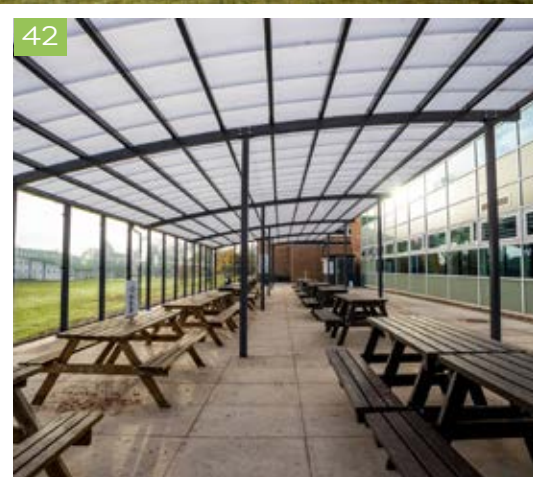
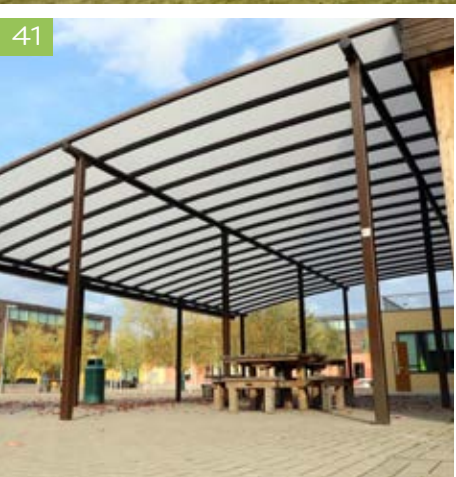
 [Click here to watch the video testimonial](#)















My name is **Paul Baker**. I'm the Estates Manager here at **Tewkesbury School**. Tewkesbury School is a large secondary school serving the local Tewkesbury area with 1,400 students and 200 staff.

The Headteacher identified a need to enhance the students' outdoor social areas. Through gaining funding, we were able to look at different designs for the outdoor canopy concept.

Communication with A&S Landscape was great, they really went the extra mile. A&S Landscape viewed the areas we had in mind and were able to design how the canopy would look in these different areas.

Having identified exactly what we wanted, A&S Landscape were extremely competitive with our other like-for-like quotes. We chose A&S Landscape based on the quality and time put into the project before we placed this order.

Communication with A&S Landscape could not have been better. We were kept abreast of every step of the project and had regular updates for this project. A&S Landscape staff when carrying out the work, were very amenable to our request for access across the site. They showed extensive knowledge regarding the installation.

Since the canopy has been installed we have seen the number of students mixing and interacting with each other increase, giving them a social space to be proud of. Throughout the warmer months we have seen community groups utilise it as a base for their extracurricular activities.

A&S Landscape helped us through the planning application process to enable us to realise this project. Through the design stage A&S Landscape consulted with us and worked out solutions for any problems that we came across. **Throughout the planning application A&S Landscape were of huge assistance.**

In considering the colour of the canopy we needed to keep within our school colour scheme. Luckily the colours available from A&S Landscape matched and we are very happy with the way the canopy looks.

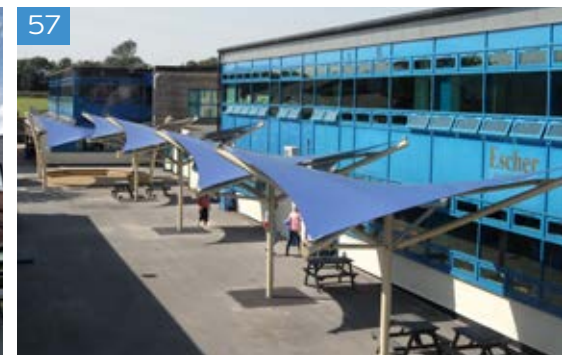
When choosing the canopy we wanted to ensure it was robust enough to withstand day-to-day wear and tear. A&S Landscape advised us to use their aluminium guttering system that they included as standard. A&S Landscape have a simple process where you are kept informed and consulted when decisions are needed.

I am pleased to say that we wouldn't hesitate to go back and use A&S Landscape for any further work with the school estate. I highly recommend A&S Landscape if you are considering a similar project.

[Click here to watch the video testimonial](#)













I'm the Deputy Principal of Blackpool Aspire Academy.

Blackpool Aspire Academy came together as an Academy from Bispham High School and Collegiate High School.

We moved into this brand new school, but it was a brand new school that did not have any shelter for students when the weather turned poor. So, a priority for us in the school was to create a shelter.

Our consultant architects went through the procurement process, found a number of quotes and then suggested to us that we look to A&S.

The service, the quality of build, the whole project so far with A&S has been absolutely fantastic.

I wanted a large shelter for our students and I was very pleased with the drawings I received from A&S showing what a thirty eight by six meter structure would look like.

It came within budget and I decided to go for that. But **the way in which A&S have started to build is really superb.** The quality of the groundwork, the way in which the columns have been erected, the rafters and the polycarbonate.

I am very pleased with the overall quality of the design and the construction.

The A&S contractors have been absolutely fantastic. They are keen and they have worked well with our site staff. I am very, very pleased with the way in which the structure is looking now.

We are now seeing a shelter coming about which is **exceeding my expectations.**

 [Click here to watch the video testimonial](#)











My name is **Dave Horne** and I am the Site Manager at **Poynton High School**.

There are 1,500 pupils in this school. The whole school is quite long. It's nearly a quarter of a mile long inside and this is the only place where you get wet. Also, it's for the kids and the kids have a picnic area where they can eat at break time or lunch time. There's also a pod, as we call it, that serves food.

Right from the word go it was good working with A&S Landscape. They are marvellous really, most responsive. I got various companies to come and quote. We looked at various products and various designs that were slightly different. We decided to go with A&S in the end because they were the most amicable company to work with. **Price wise they were the best. They seemed to bend over backwards to meet our needs.**

Aluminium guttering, this is a good thing really because it is a lot stronger. Plastic gutters deteriorate and lose colour. Some people just said "oh we don't do that, we don't use aluminium guttering" and were quite adamant about it. Whereas A&S Landscape use aluminium gutters as standard.

A&S Landscape right from the word go were very good with this. Timewise, they made appointments and stuck to them. If they couldn't make it they'd let me know. **During the job they even e-mailed me every day to explain what they were up to. The team that came worked very well. They were really efficient, they just got on with the job, no messing around which I like.** They started the job on the day the kids returned to school in January in poor weather, but they kept going. We've got four access doors and two gates in the actual area, which at certain times they had to close. But constantly, while the children were at school, they worked with us. They fenced certain areas off as they got to work. They got no trouble from the children and vice versa. We just carried on as if it wasn't happening really.

It has changed the area quite considerably because now the kids can sit outside and it's dry. They sit out in the winter even, when it's cold they'll sit out and even in the wet, but now they can keep dry. They get food from the pod that is next door to the canopy and people can walk from one side of the school to the other without getting wet. It's a big asset to the school. Because we are the biggest school in the area, people will contact us asking who we use for various different things. **I wouldn't hesitate to recommend A&S Landscape. They've been marvellous. They really are first class.**

[Click here to watch the video testimonial](#)





My name is **Ian Pritchard** and I am the business manager at **Kingsmead School**.

Kingsmead School is a rapidly improving school. We are officially the most popular mainstream secondary school in Staffordshire. As we grow, so does the need of the facilities and that's why we contacted A&S Landscape to talk about putting a canopy in place.

We were finding that we needed the space quite simply. The dining room could not fit anymore students in there, cramming in there as it is.

So we wanted to increase catering space but also we wanted to create something that was modern and could stand against the setting of the 1938 school and offset it and would be exciting for the students and that's an additional classroom space as well for some of the lessons.

At the quotation stage communication with A&S Landscape was very good. We were very pleasantly surprised with the quote that they gave and as a result we had to make sure that they were working to the scope of works that were given and again we were pleasantly surprised to find that they were.

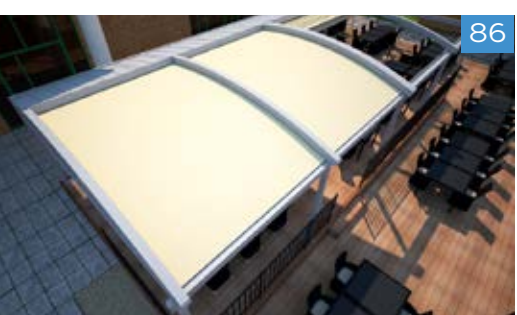
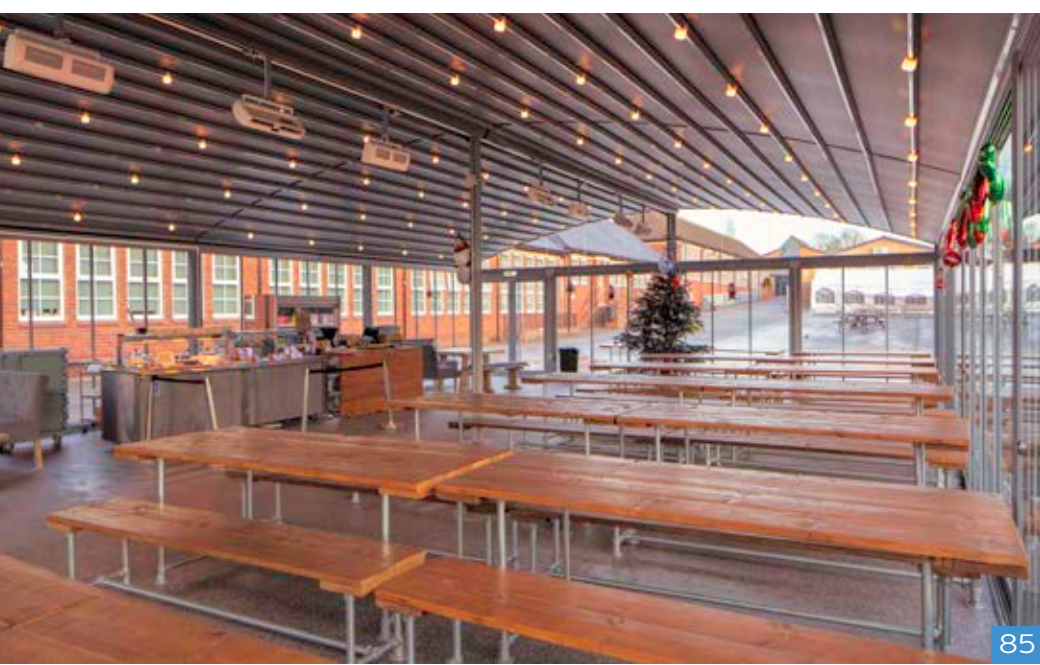
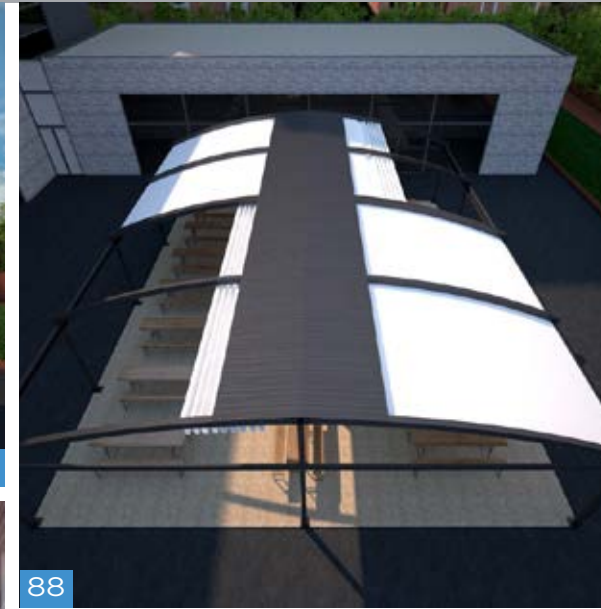
We chose to use A&S Landscape following the tender process, not only because **they were very, very competitive on their price but also because they had been so good at communicating with us and answering all of our questions during that process.**

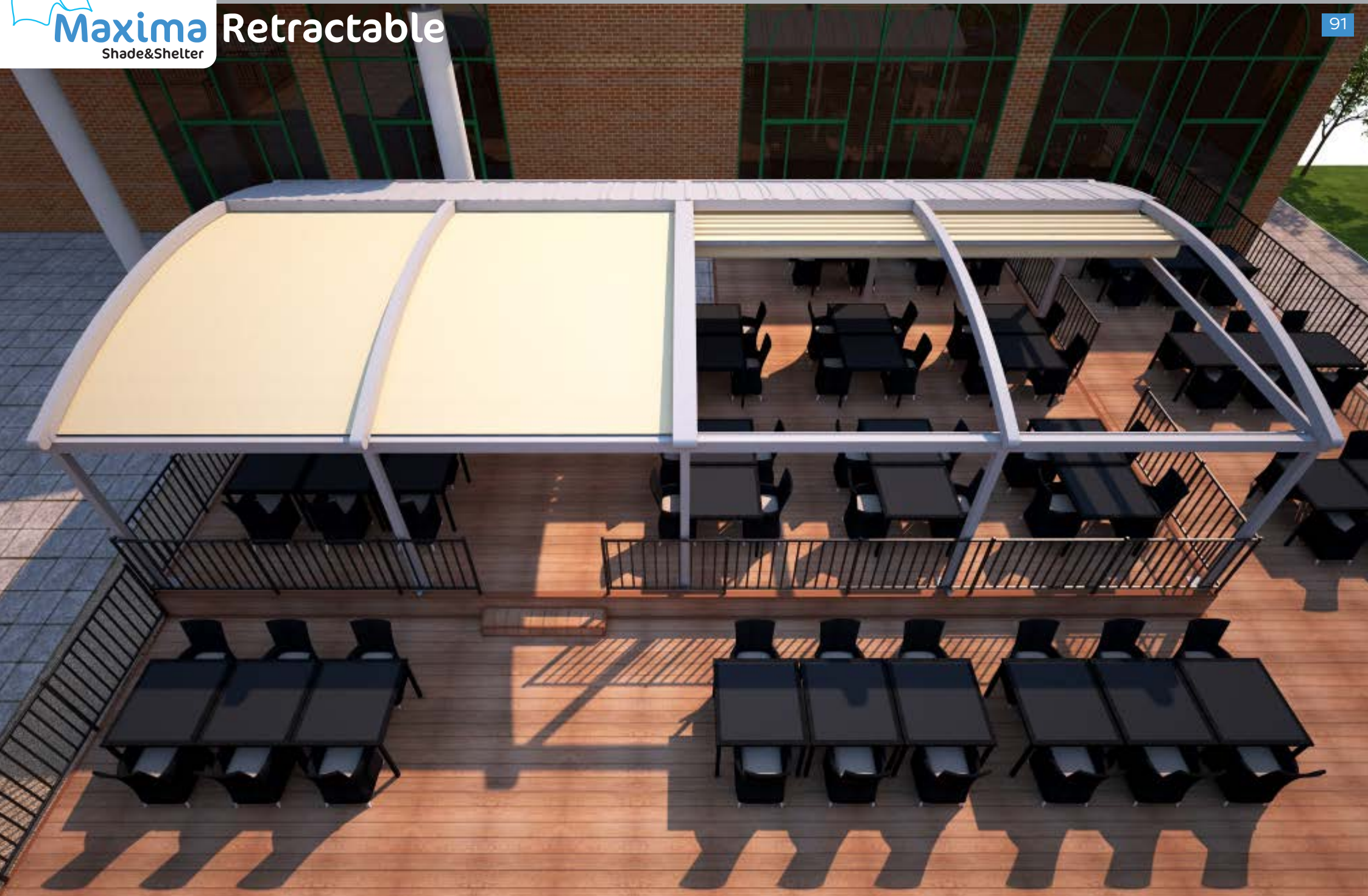
The canopy has changed things for the students and staff at the school. Not only do we have a larger space for catering, the students and the staff are able to use it during lesson times so several of our lessons have already taken place in here and it's an exciting and different space for the teachers to move around in and use as opposed to the classroom.

A&S Landscape would be contacted again if we were ever looking to put another canopy in.

We would recommend A&S Landscape to other schools.

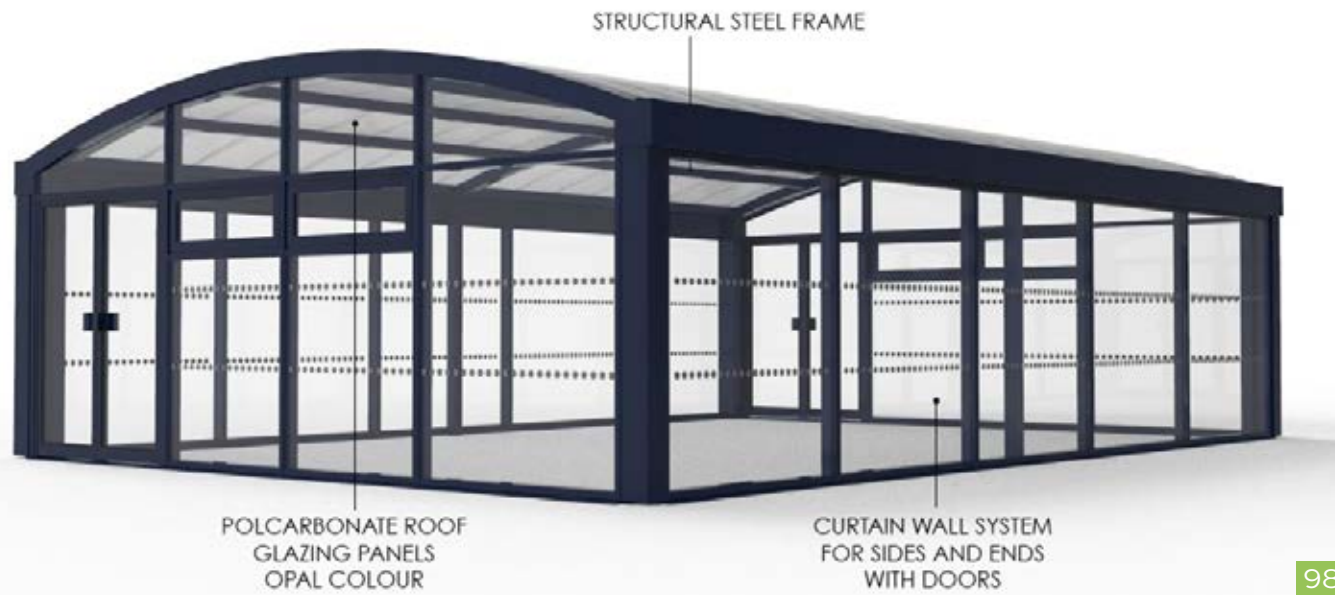
[Click here to watch the video testimonial](#)











99



98 100

101







103



104



105



106



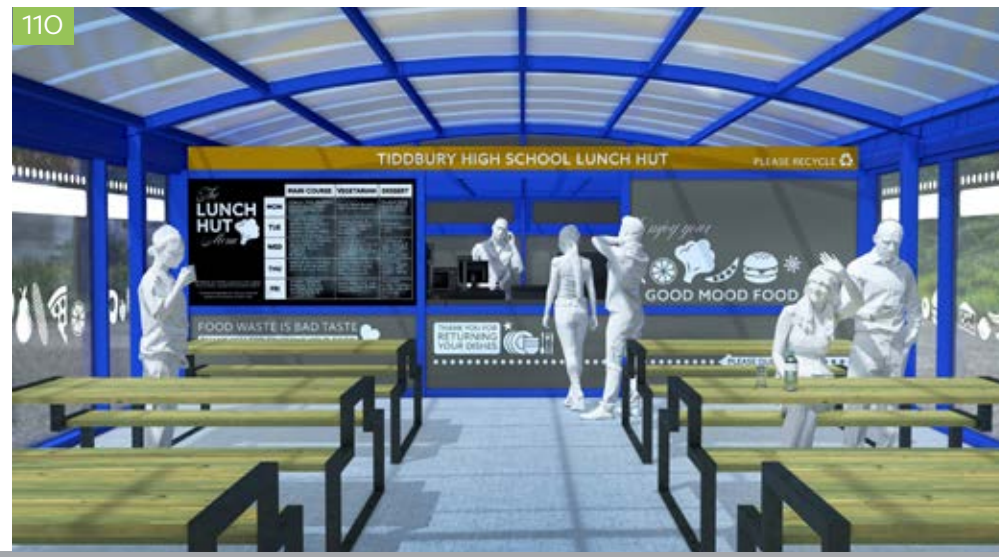
108



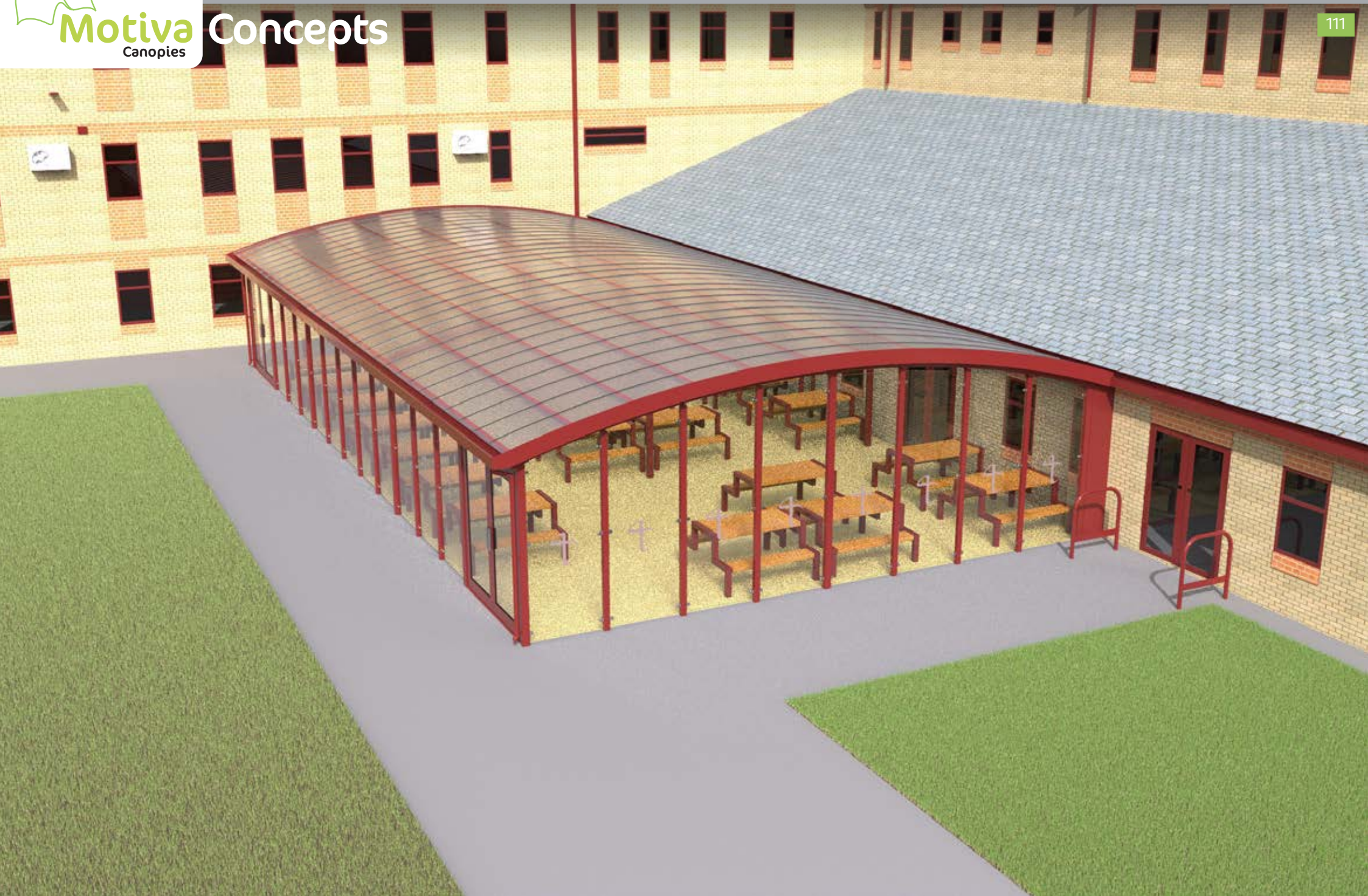
109



107

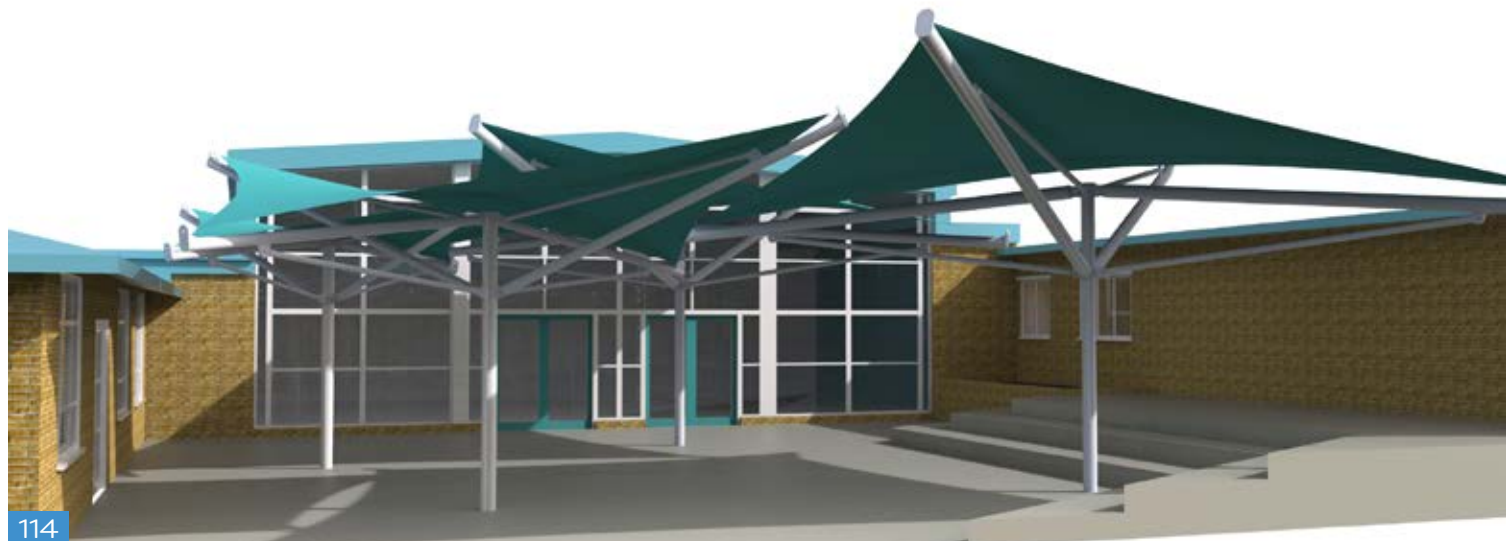


110





112



114



115



113



116



117

Why should you use us?



Trust

Trust isn't something we're given. It's earned - by hard work, by doing what we say we're going to do, by doing it well first time and every time. It's how we do business, we believe in building relationships with our clients based on achieving commitments.



Independent

We consider our independence to be one of the greatest benefits we offer our clients. We aren't owned by a group, parent company or even bank, we own the firm and we control the advice given to our clients. We don't have sales quotas and we aren't pushing specific products. We are in a position to serve the client's best interests. We work for the client and the client only.



Expertise

At A&S Landscape we have the brains, passion and personality to make your project work, our clients benefit from our vast skills base, built up over three generations. This has given us the expertise to tackle projects from small canopies to large schemes. We specialise in working with schools where we have a 40 year track record.



Confident

Our confidence comes from our clients' confidence in us. It's grounded, based on truth and not self-belief. It's also one of the major reasons we are confident enough to open up to our clients and why we don't hide behind industry pseudo-science.



Approachable

Being approachable is one of our founding principles and it's our honesty that makes us that way. We know what we're doing without being a know-it-all and we don't believe in hiding behind anything or anyone. We try to avoid confusing technical jargon, we speak your language and always strive to understand your unique circumstances before we offer advice.



Uncomplicated

By this we don't mean blunt, it's just we don't feel the need to talk ourselves up. The truth, simply told, is enough. (A quick look at our case studies and testimonials won't do any harm either). We think being direct, open and honest gets things done.



Value for Money

With most schools trying to tighten the purse-strings in the current climate, we understand the importance of offering excellent value for money. Being a designer, manufacturer and installer means that we are less reliant on prices set by suppliers, (being one of the largest players in the industry helps too). We think it's important that we offer you value for money, not just the lowest price. After all, value is a combination of price and quality.



Creative

We are passionate about finding the solution to inspire you and to make your school stand out! Whether you already know what you need or would like us to propose a range of ideas to you, please contact us for a chat about your requirements.

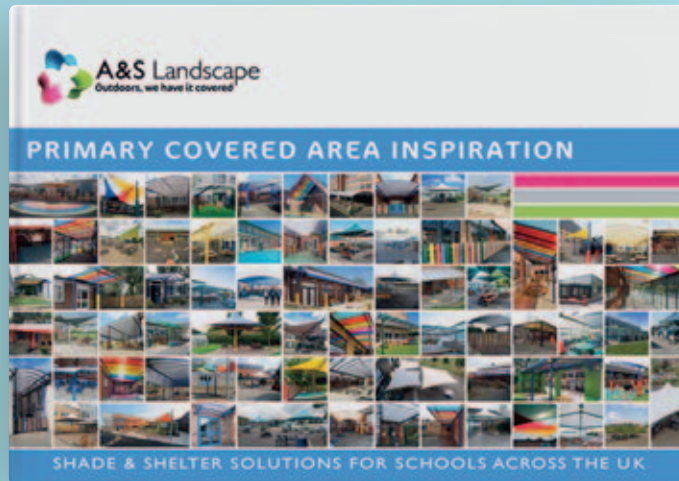
Who do we work for?

Our clients range across the public and private sectors. They include government departments, schools, academies, architects and builders.

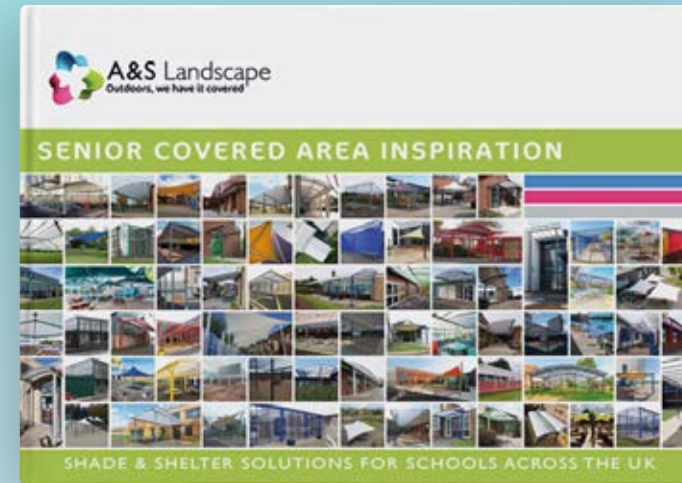
Centrally located and with regional installation teams we are ideally placed to offer the same excellent service to clients right across the UK, wherever you are we can deliver the perfect finished result.



Have you seen our other INSPIRATION GUIDES?



[CLICK to download](#)



[CLICK to download](#)



[CLICK to request](#)



[CLICK to download](#)