

A truly integrated software solution tailored to meet the specific functions required by cost managers in their daily tasks



Solution overview

## Cost & Programme Management

Causeway's CATO Cost & Programme Management software suite provides a comprehensive solution for cost consultants, enabling cost advice and management to be provided quickly, consistently, and at the lowest price.

Developed in close collaboration with leading QS professionals, CATO Cost & Programme Management is a modular suite of tools that allows users to select the functionality their business needs, as and when they need it. These include Automated Measurement tools for measuring from CAD drawings and Building Information Models (BIMs).

As such, Cost & Programme Management provides a fully integrated approach to the preparation and use of documentation for the procurement and control of construction projects.

### Feasibility Estimates

The QuickEst module in Cost & Programme Management provides a fast and accurate method for producing elemental estimates based on analysis of previous projects. It can also be used with data created from external sources, such as BCIS online. The resulting estimate may be transferred to cost planning or exported to many other file formats including PDF, Excel, Lotus, Word and csv.

### Cost Planning

The CATO Cost Planning module uses a familiar spreadsheet style interface supported by easy to use explorer-style navigation, giving users complete control over the number of levels to which the detail may be taken. Inherent flexibility enables costs to be developed using data from other projects, or by using the integrated 'rate builder'. There are also dynamic measurement features for use with CAD and BIM files.

### Bills of Quantity Production

As well as integrating with the latest onscreen CAD and BIM measurements, the BoQ production module supports the use of traditional DimSheets, making it ideal for all preferred working methods. Completed BoQs can be priced for pre-tender purposes, or priced with returned tender rates for tender analysis. They can include up to six sort codes, for producing a multi-sortation report. The module also includes multiple libraries and allows the creation of user-defined libraries.

### Earthworks

The Earthworks module enables easy production of cut and fill volume calculations direct from proposed design models and existing land surveys. Design data can be imported from any of the major design solutions for ground modelling, allowing quantities of different materials to be aggregated to cumulative values. In addition to proposed levels the module can be used to determine the optimum proposed ground level, minimising the volume of spoil removed from site.

### Embedded Spreadsheet

Embedded spreadsheet functionality enables integration of spreadsheet measurements with the Cost Planning or BoQ production module. As a result, template spreadsheets can be created for complex calculations and the templates can build into a corporate standard library. Dynamic links to spreadsheets ensure that the latest values are incorporated in calculations, with links to quantity values in the Cost Planning or BoQ module.

The modularity of the CATO suite enables users to select the core functionalities that relate to their business, resulting in a host of benefits, including:

- Truly integrated software suite
- Tailored to the specific needs of cost managers
- Cradle to grave cost management
- Significant time-savings
- Covers full and management contracts
- Advanced functions for procurement and control





# Solution overview



software for the built environment

## Automated Measurement

Automated Measurement functions allow measurement from 2D and 3D CAD/model formats including DWG, DWF/DWFX, IFC and PDF files. An integral scheduling tool allows automated schedule measurements of like items, in addition to functionality for explicit measurements. 3D models can be sliced in up to three different planes, with the ability to take measurements from these planes.

## Whole Life Costing

The Whole-Life Costing module delivers cash flow forecasting based on the running costs of a project, with the ability to report at all levels of detail. It supports multiple buildings, allowing life cycle costs to be aggregated, and can associate asset replacement with FM costs. Consequently, CATO Whole Life Costing is the industry standard with its ability to deliver post-construction reports on asset replacement, FM and operational costs for the building's lifecycle.

## Cashflow Forecasting

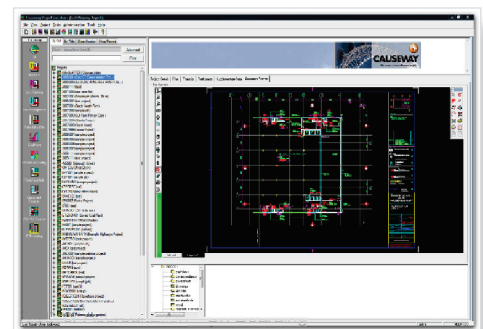
The Cashflow module is an invaluable aid for effective financial forecasting and monitoring of construction projects. It offers clear graphical representations of cash flows at element, building, scheme or portfolio level - and within time constraints. Initial projections of cash flow can be created from budget costs and timescale and then further refined as more information becomes available.

## Programme Management

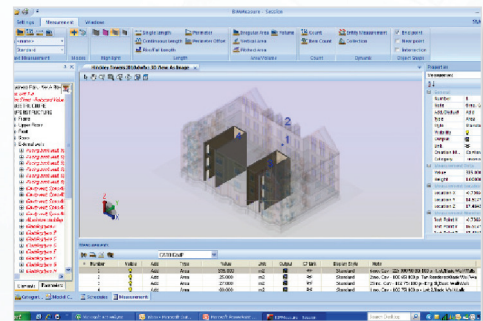
Cost Management allows packages of work to be managed in the post-contract phase, tracking adjustments that will impact on the budget - from client changes to package transfers and variations. Multiple cost plans can be brought together and re-sorted into packages for overall package cost management, with the ability to view costings at package level or summarised to a group level. A comprehensive reporting system produces reports from executive summaries to detailed activities.

## Document Register

With the Document Register, users can monitor, record receipt and issue all pre- and post-contract documentation. Revised documents can be tracked and compared with previous revisions. Documents received can be logged and 2D or 3D drawings/models can be viewed or compared with an integrated viewer option. Entire documents can be dragged into the Register, with the ability to tag documents for ease of referencing.



Optional Document viewer supporting over 250 different file formats



Enhanced option allowing measurement direct from BIMs

## Head Office

Comino House,  
Furlong Road  
Bourne End, Bucks  
United Kingdom  
SL8 5AQ

T: +44 1628 552000  
E: [marketing@causeway.com](mailto:marketing@causeway.com)  
W: [www.causeway.com](http://www.causeway.com)

## Middle East

1202 Tower B  
Business Central Towers  
Dubai Internet City  
PO Box 500843  
Dubai, UAE

T: +971 4 434 2119  
E: [marketing@causeway.com](mailto:marketing@causeway.com)

## India

No: 128/9, Maruthi Sapphire  
HAL Airport Road  
Murugesh Palya  
Bangalore, India  
560017

T: +91 8041472617  
E: [marketing@causeway.com](mailto:marketing@causeway.com)